

Quantitative Analysis for Ethanol & Qualitative Analysis for Other Volatiles

Analytical Method(s): 1.0

Device: Hamilton MICROLAB Liquid Processor/Dilutor Serial Number: ML600GB9897

Volatiles Quality Assurance Controls Run Date(s): 10/5/21 Worklist: 5260

Calibration Curve: 10/1/2021

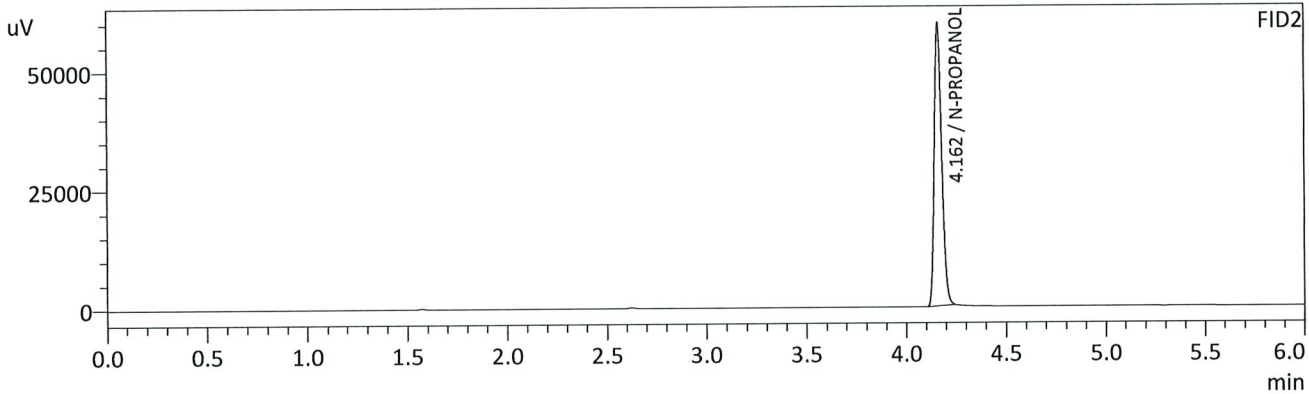
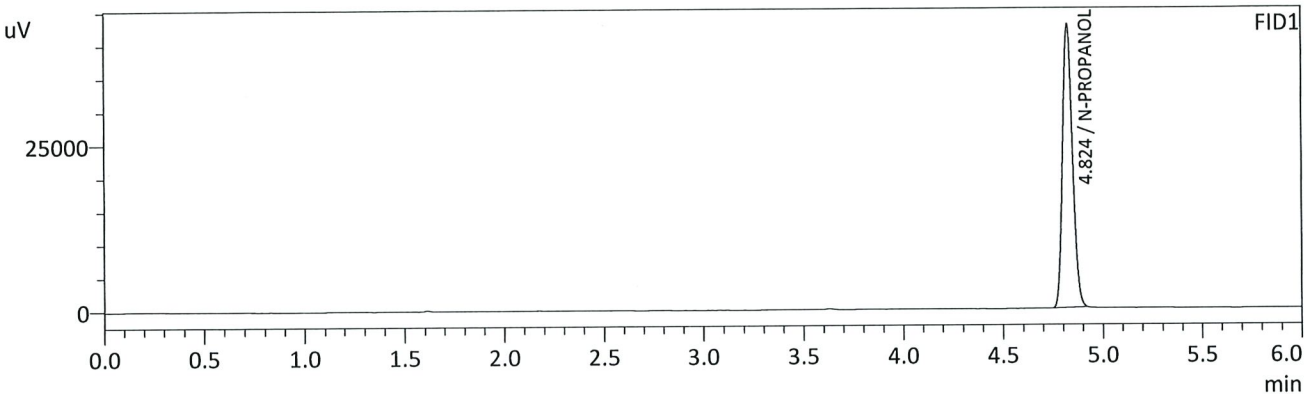
Control level	Expiration	Lot #	Target Value	Acceptable Range	Overall Results
Level 1	Jul-23	1907006	0.0764	0.06888-0.0840	0.0747 g/100cc
Level 2	Jul-23	1907007	0.2170	0.1953-0.2387	g/100cc
Multi-Component mixture:		Lot #	FN06041902		ok
Curve Fit:		Column 1	0.99977	Column2	0.99960

Ethanol Calibration Reference Material		Target Value	Acceptable Range	Column 1	Column 2	Precision	Mean
Calibrator level	50	0.050	0.045 - 0.055	0.0523	0.0536	0.0013	0.0529
	100	0.100	0.090 - 0.110	0.1005	0.1003	0.0002	0.1004
	200	0.200	0.180 - 0.220	0.1980	0.1968	0.0012	0.1974
	300	0.300	0.270 - 0.330	0.2964	0.2959	0.0005	0.2961
	400	0.400	0.360 - 0.440			0	#DIV/0!
	500	0.500	0.450 - 0.550	0.5025	0.5032	0.0007	0.5028

Aqueous Controls		Target Value	Acceptable Range	Overall Results
Control level	80	0.080	0.076 - 0.084	0.079 g/100cc

RC

Sample Name : INT STD BLK 1
 Vial # : 1
 Data Filename : INT STD BLK 1_1052021_001.gcd
 Method Filename : ALCOHOL.gcm
 Batch Filename : 10-5-21 BATCH.gcb
 Date Acquired : 10/5/2021 11:07:24 AM
 Date Processed : 10/5/2021 1:13:06 PM
 C:\LabSolutions\Data\2021\10-01-21 RC\ALCOHOL.gcm



FID1

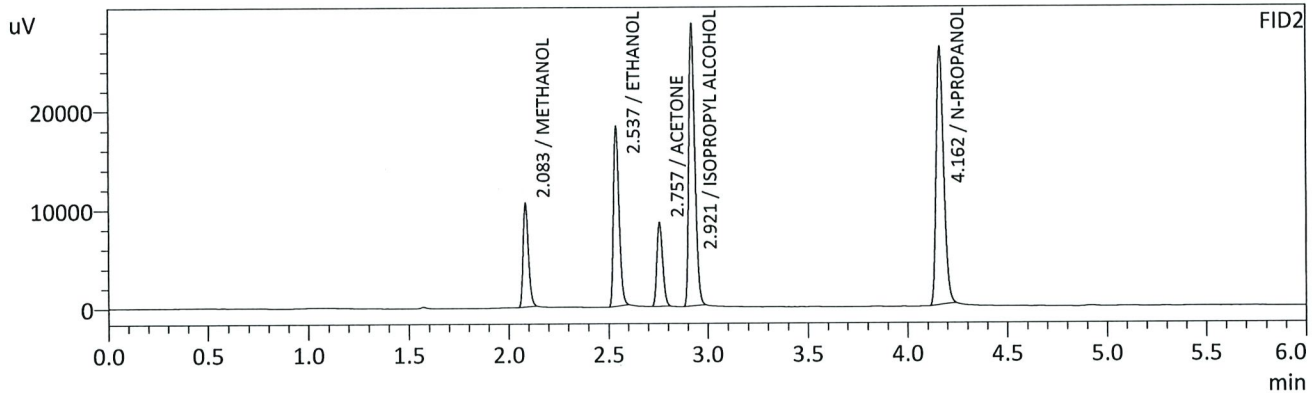
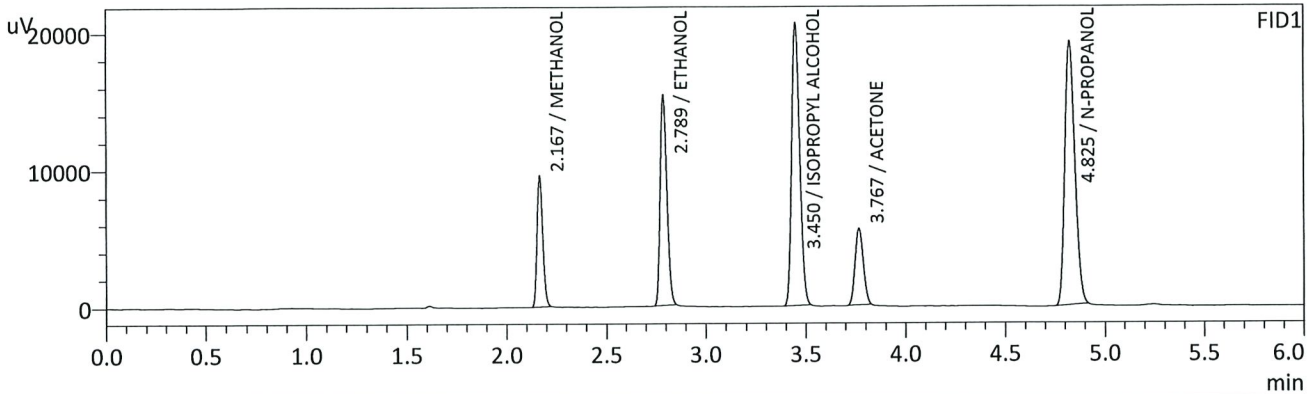
Name	Conc.	Unit	Area	Height
METHANOL	--	g/100cc	--	--
ACETALDEHYDE	--	g/100cc	--	--
ETHANOL	--	g/100cc	--	--
ISOPROPYL ALCOHOL	--	g/100cc	--	--
ACETONE	--	g/100cc	--	--
N-PROPANOL	0.0000	g/100cc	149330	42666
DFE	--	g/100cc	--	--
TFE	--	g/100cc	--	--

FID2

Name	Conc.	Unit	Area	Height
ACETALDEHYDE	--	g/100cc	--	--
METHANOL	--	g/100cc	--	--
ETHANOL	--	g/100cc	--	--
ACETONE	--	g/100cc	--	--
ISOPROPYL ALCOHOL	--	g/100cc	--	--
N-PROPANOL	0.0000	g/100cc	156312	59516
DFE	--	g/100cc	--	--
TFE	--	g/100cc	--	--

RC

Sample Name : MULTI-COMP MIX
 Vial # : 2
 Data Filename : MULTI-COMP MIX_1052021_002.gcd
 Method Filename : ALCOHOL.gcm
 Batch Filename : 10-5-21 BATCH.gcb
 Date Acquired : 10/5/2021 11:16:07 AM
 Date Processed : 10/5/2021 1:13:07 PM
 C:\LabSolutions\Data\2021\10-01-21 RC\ALCOHOL.gcm



FID1

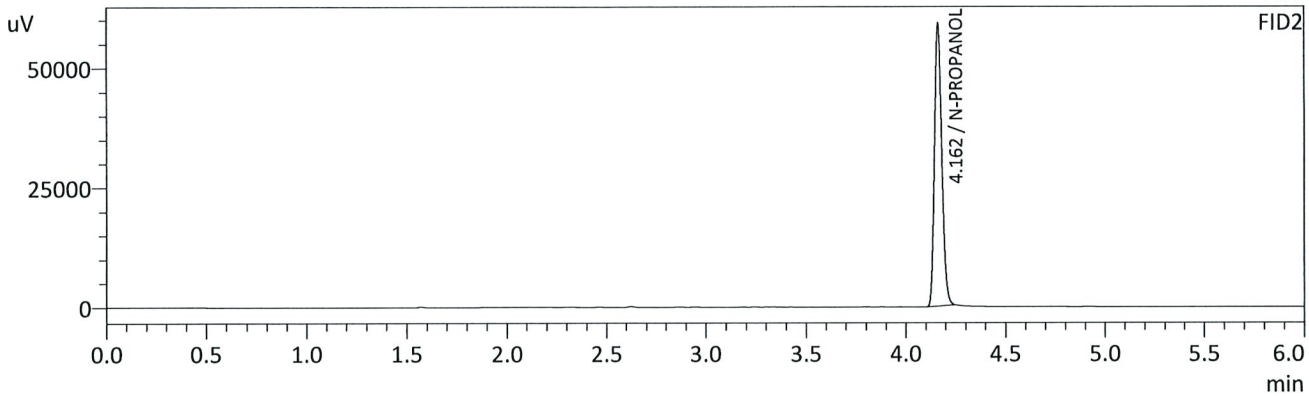
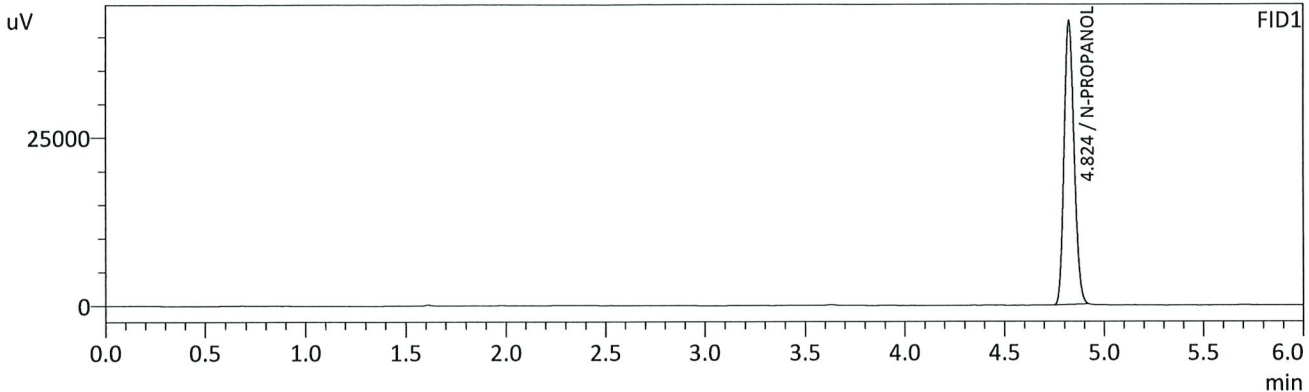
Name	Conc.	Unit	Area	Height
METHANOL	0.0000	g/100cc	19222	9479
ACETALDEHYDE	--	g/100cc	--	--
ETHANOL	0.2693	g/100cc	35424	15305
ISOPROPYL ALCOHOL	0.0000	g/100cc	57263	20512
ACETONE	0.0000	g/100cc	15797	5553
N-PROPANOL	0.0000	g/100cc	67056	19118
DFE	--	g/100cc	--	--
TFE	--	g/100cc	--	--

FID2

Name	Conc.	Unit	Area	Height
ACETALDEHYDE	--	g/100cc	--	--
METHANOL	0.0000	g/100cc	19540	10433
ETHANOL	0.2685	g/100cc	35956	18147
ACETONE	0.0000	g/100cc	16918	8454
ISOPROPYL ALCOHOL	0.0000	g/100cc	59716	28389
N-PROPANOL	0.0000	g/100cc	68705	26026
DFE	--	g/100cc	--	--
TFE	--	g/100cc	--	--

RC

Sample Name : INT STD BLK 2
 Vial # : 3
 Data Filename : INT STD BLK 2_1052021_003.gcd
 Method Filename : ALCOHOL.gcm
 Batch Filename : 10-5-21 BATCH.gcb
 Date Acquired : 10/5/2021 11:25:04 AM
 Date Processed : 10/5/2021 1:13:08 PM
 C:\LabSolutions\Data\2021\10-01-21 RC\ALCOHOL.gcm



FID1

Name	Conc.	Unit	Area	Height
METHANOL	--	g/100cc	--	--
ACETALDEHYDE	--	g/100cc	--	--
ETHANOL	--	g/100cc	--	--
ISOPROPYL ALCOHOL	--	g/100cc	--	--
ACETONE	--	g/100cc	--	--
N-PROPANOL	0.0000	g/100cc	147012	42182
DFE	--	g/100cc	--	--
TFE	--	g/100cc	--	--

FID2

Name	Conc.	Unit	Area	Height
ACETALDEHYDE	--	g/100cc	--	--
METHANOL	--	g/100cc	--	--
ETHANOL	--	g/100cc	--	--
ACETONE	--	g/100cc	--	--
ISOPROPYL ALCOHOL	--	g/100cc	--	--
N-PROPANOL	0.0000	g/100cc	153749	58954
DFE	--	g/100cc	--	--
TFE	--	g/100cc	--	--

RC

VOLATILES DETERMINATION CASEFILE WORKSHEET

Laboratory No.: QC1-1

Analysis Date(s): 10/5/21

	Column 1 FID A	Column 2 FID B	Column Precision	Mean Value	Sample A-B Difference	Over-all Mean
Sample Results	0.0748	0.0747	0.0001	0.0747	0.0000	0.0747
(g/100cc)	0.0746	0.0749	0.0003	0.0747		

Analysis Method

Refer to Blood Alcohol Method #1

Instrument Information

Instrument information is stored centrally.

Refer to Instrument Method: Alcohol.m/.gcm, Volatiles.m/.gcm

Reporting of Results

Uncertainty of Measurement (UM%): 5.00%

Overall Mean (g/100cc)	Low	High	5% of Mean
0.074	0.070	0.078	0.004

	Reported Result	
	0.074	

Calibration and control data are stored centrally.

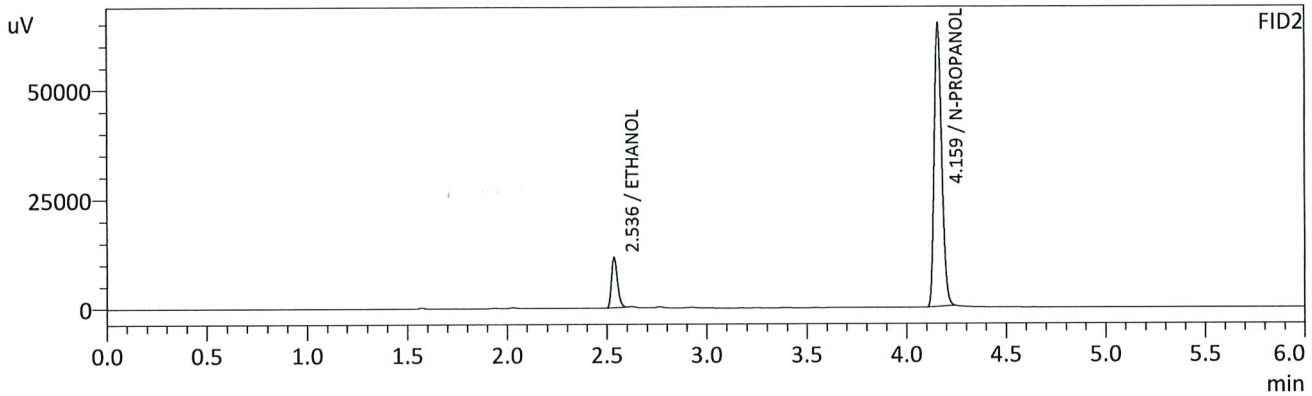
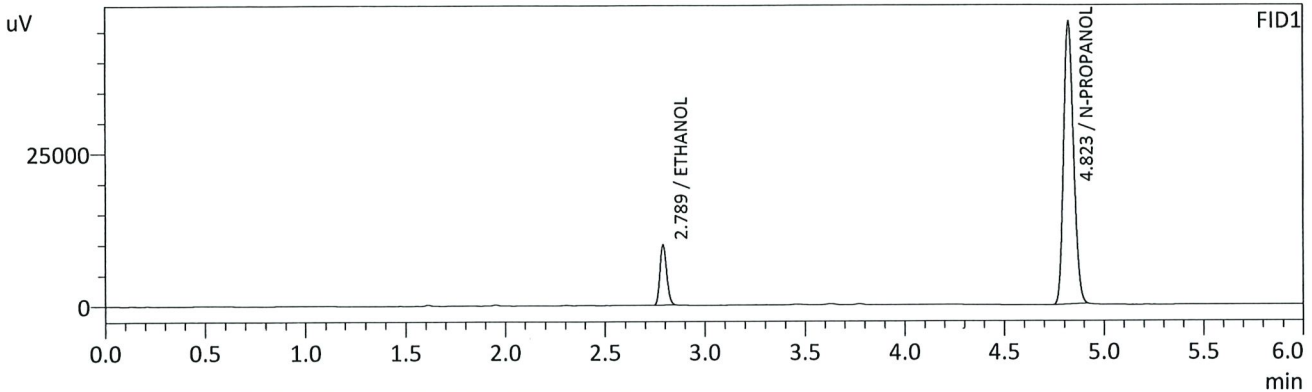


Revision: 3

Issue Date: 12/28/2020

Issuing Authority: Quality Manager

Sample Name : QC-1-1-A
 Vial # : 4
 Data Filename : QC-1-1-A_1052021_004.gcd
 Method Filename : ALCOHOL.gcm
 Batch Filename : 10-5-21 BATCH.gcb
 Date Acquired : 10/5/2021 11:33:48 AM
 Date Processed : 10/5/2021 1:13:10 PM
 C:\LabSolutions\Data\2021\10-01-21 RC\ALCOHOL.gcm



FID1

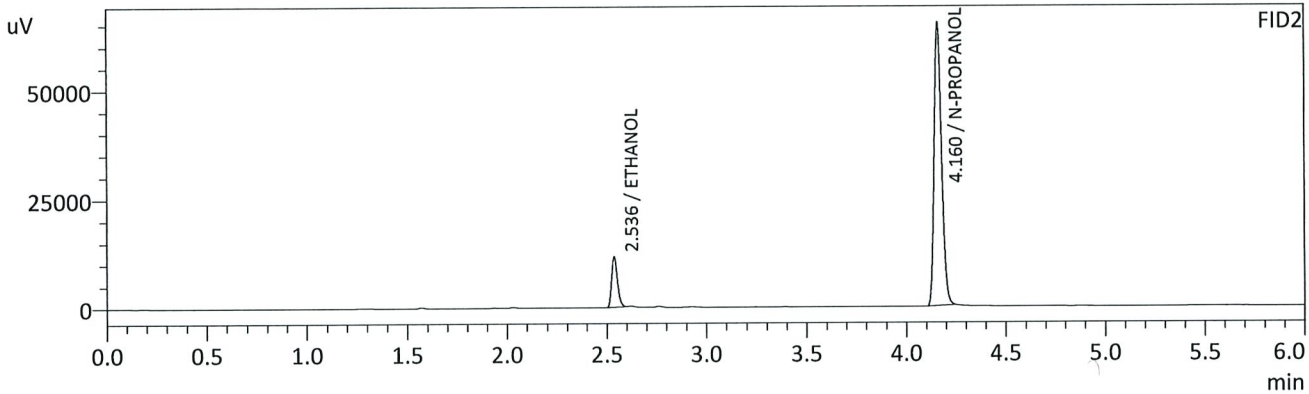
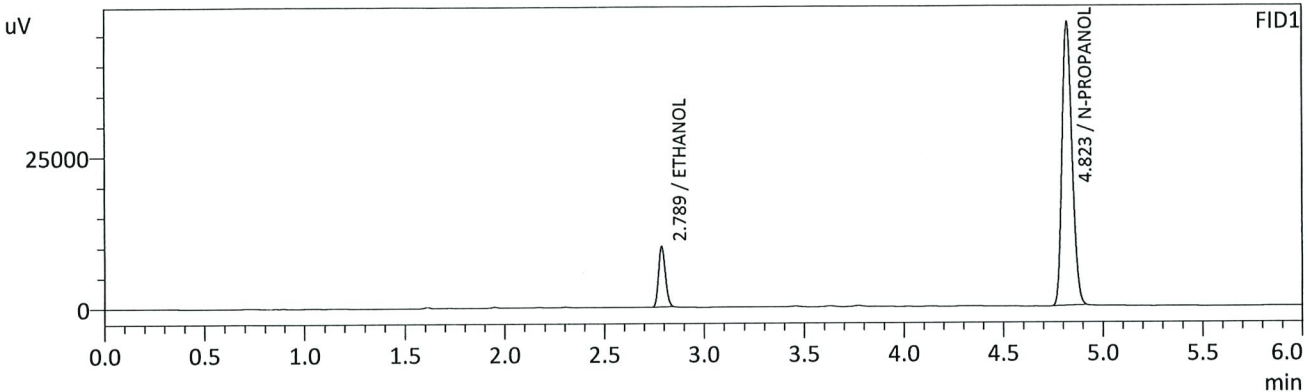
Name	Conc.	Unit	Area	Height
METHANOL	--	g/100cc	--	--
ACETALDEHYDE	--	g/100cc	--	--
ETHANOL	0.0748	g/100cc	23410	9921
ISOPROPYL ALCOHOL	--	g/100cc	--	--
ACETONE	--	g/100cc	--	--
N-PROPANOL	0.0000	g/100cc	163296	46491
DFE	--	g/100cc	--	--
TFE	--	g/100cc	--	--

FID2

Name	Conc.	Unit	Area	Height
ACETALDEHYDE	--	g/100cc	--	--
METHANOL	--	g/100cc	--	--
ETHANOL	0.0747	g/100cc	23203	11506
ACETONE	--	g/100cc	--	--
ISOPROPYL ALCOHOL	--	g/100cc	--	--
N-PROPANOL	0.0000	g/100cc	170116	64549
DFE	--	g/100cc	--	--
TFE	--	g/100cc	--	--

CAC

Sample Name : QC-1-1-B
 Vial # : 5
 Data Filename : QC-1-1-B_1052021_005.gcd
 Method Filename : ALCOHOL.gcm
 Batch Filename : 10-5-21 BATCH.gcb
 Date Acquired : 10/5/2021 11:42:44 AM
 Date Processed : 10/5/2021 1:13:11 PM
 C:\LabSolutions\Data\2021\10-01-21 RC\ALCOHOL.gcm



FID1

Name	Conc.	Unit	Area	Height
METHANOL	--	g/100cc	--	--
ACETALDEHYDE	--	g/100cc	--	--
ETHANOL	0.0746	g/100cc	23503	10003
ISOPROPYL ALCOHOL	--	g/100cc	--	--
ACETONE	--	g/100cc	--	--
N-PROPANOL	0.0000	g/100cc	164277	46737
DFE	--	g/100cc	--	--
TFE	--	g/100cc	--	--

FID2

Name	Conc.	Unit	Area	Height
ACETALDEHYDE	--	g/100cc	--	--
METHANOL	--	g/100cc	--	--
ETHANOL	0.0749	g/100cc	23405	11640
ACETONE	--	g/100cc	--	--
ISOPROPYL ALCOHOL	--	g/100cc	--	--
N-PROPANOL	0.0000	g/100cc	171063	65023
DFE	--	g/100cc	--	--
TFE	--	g/100cc	--	--

AC

VOLATILES DETERMINATION CASEFILE WORKSHEET

Laboratory No.: 0.080 QA

Analysis Date(s): 10/5/21

	Column 1 FID A	Column 2 FID B	Column Precision	Mean Value	Sample A-B Difference	Over-all Mean
Sample Results	0.0794	0.0798	0.0004	0.0796	0.0005	0.0798
(g/100cc)	0.0799	0.0803	0.0004	0.0801		

Analysis Method

Refer to Blood Alcohol Method #1

Instrument Information

Instrument information is stored centrally.

Refer to Instrument Method: Alcohol.m/.gcm, Volatiles.m/.gcm

Reporting of Results

Uncertainty of Measurement (UM%): 5.00%

Overall Mean (g/100cc)	Low	High	5% of Mean
0.079	0.075	0.083	0.004

	Reported Result	
	0.079	

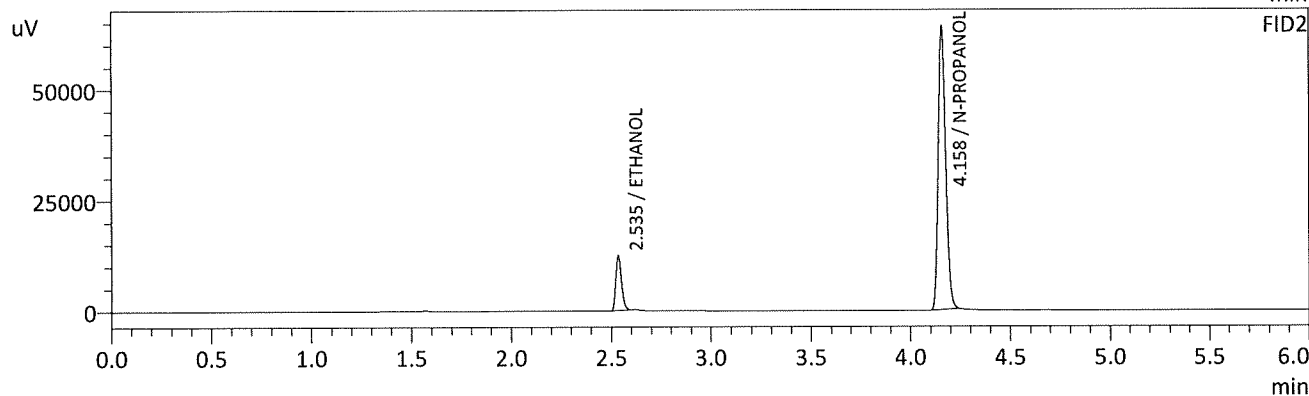
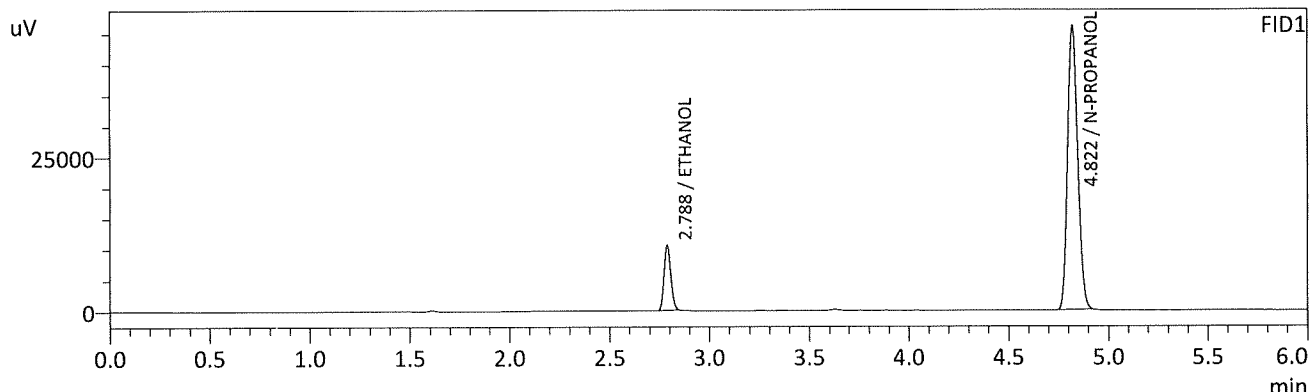
Calibration and control data are stored centrally.


Revision: 3

Issue Date: 12/28/2020

Issuing Authority: Quality Manager

Sample Name : 0.08 QA - A
 Vial # : 6
 Data Filename : 0.08 QA - A_1052021_006.gcd
 Method Filename : ALCOHOL.gcm
 Batch Filename : 10-5-21 BATCH.gcb
 Date Acquired : 10/5/2021 11:51:38 AM
 Date Processed : 10/5/2021 1:13:12 PM
 C:\LabSolutions\Data\2021\10-01-21 RC\ALCOHOL.gcm



FID1

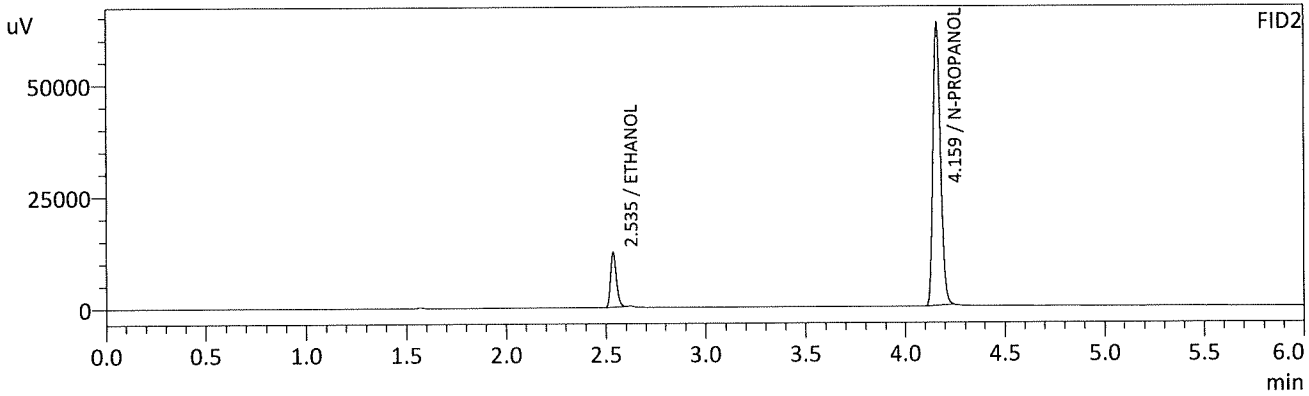
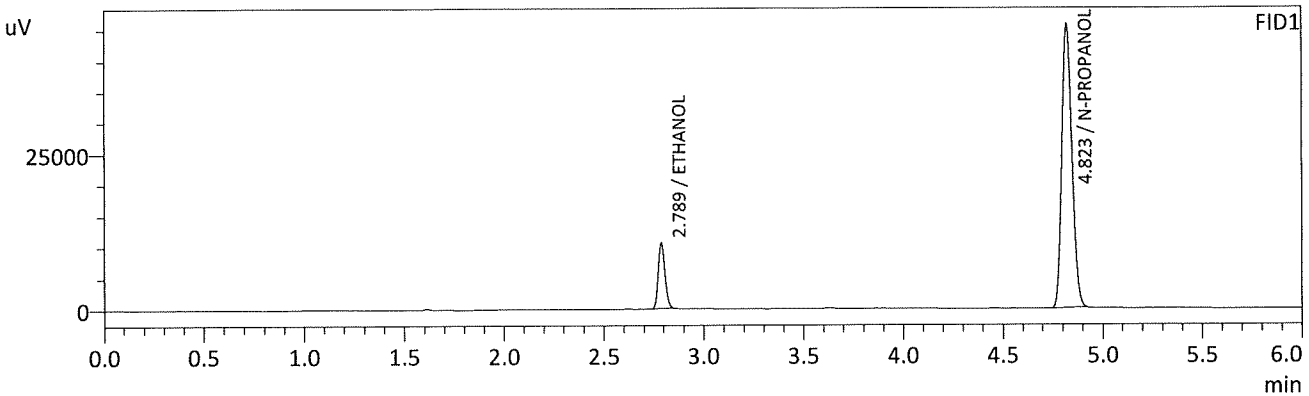
Name	Conc.	Unit	Area	Height
METHANOL	--	g/100cc	--	--
ACETALDEHYDE	--	g/100cc	--	--
ETHANOL	0.0794	g/100cc	24647	10529
ISOPROPYL ALCOHOL	--	g/100cc	--	--
ACETONE	--	g/100cc	--	--
N-PROPANOL	0.0000	g/100cc	161542	45959
DFE	--	g/100cc	--	--
TFE	--	g/100cc	--	--

FID2

Name	Conc.	Unit	Area	Height
ACETALDEHYDE	--	g/100cc	--	--
METHANOL	--	g/100cc	--	--
ETHANOL	0.0798	g/100cc	24668	12161
ACETONE	--	g/100cc	--	--
ISOPROPYL ALCOHOL	--	g/100cc	--	--
N-PROPANOL	0.0000	g/100cc	168246	63383
DFE	--	g/100cc	--	--
TFE	--	g/100cc	--	--

RC

Sample Name : 0.08 QA - B
 Vial # : 7
 Data Filename : 0.08 QA - B_1052021_007.gcd
 Method Filename : ALCOHOL.gcm
 Batch Filename : 10-5-21 BATCH.gcb
 Date Acquired : 10/5/2021 12:00:16 PM
 Date Processed : 10/5/2021 1:13:13 PM
 C:\LabSolutions\Data\2021\10-01-21 RC\ALCOHOL.gcm



FID1

Name	Conc.	Unit	Area	Height
METHANOL	--	g/100cc	--	--
ACETALDEHYDE	--	g/100cc	--	--
ETHANOL	0.0799	g/100cc	24570	10492
ISOPROPYL ALCOHOL	--	g/100cc	--	--
ACETONE	--	g/100cc	--	--
N-PROPANOL	0.0000	g/100cc	160108	45688
DFE	--	g/100cc	--	--
TFE	--	g/100cc	--	--

FID2

Name	Conc.	Unit	Area	Height
ACETALDEHYDE	--	g/100cc	--	--
METHANOL	--	g/100cc	--	--
ETHANOL	0.0803	g/100cc	24604	12182
ACETONE	--	g/100cc	--	--
ISOPROPYL ALCOHOL	--	g/100cc	--	--
N-PROPANOL	0.0000	g/100cc	166695	62965
DFE	--	g/100cc	--	--
TFE	--	g/100cc	--	--

JRC

VOLATILES DETERMINATION CASEFILE WORKSHEET

Laboratory No.: QC2-1

Analysis Date(s): 10/5/21

	Column 1 FID A	Column 2 FID B	Column Precision	Mean Value	Sample A-B Difference	Over-all Mean
Sample Results	0.2013	0.2000	0.0013	0.2006	0.0043	0.2027
(g/100cc)	0.2057	0.2041	0.0016	0.2049		

Analysis Method

Refer to Blood Alcohol Method #1

Instrument Information

Instrument information is stored centrally.

Refer to Instrument Method: Alcohol.m/.gcm, Volatiles.m/.gcm

Reporting of Results

Uncertainty of Measurement (UM%): 5.00%

Overall Mean (g/100cc)	Low	High	5% of Mean
0.202	0.191	0.213	0.011

Reported Result
0.202

Calibration and control data are stored centrally.

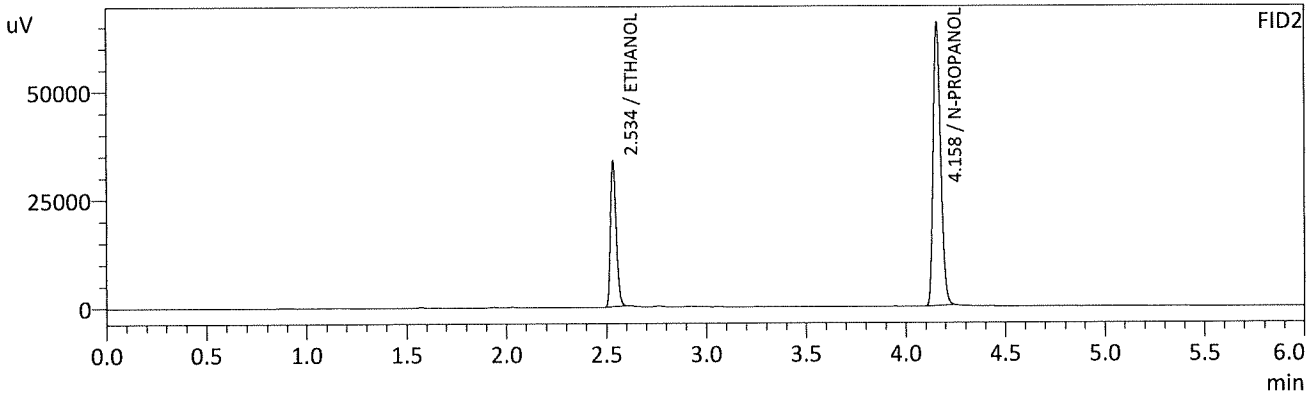
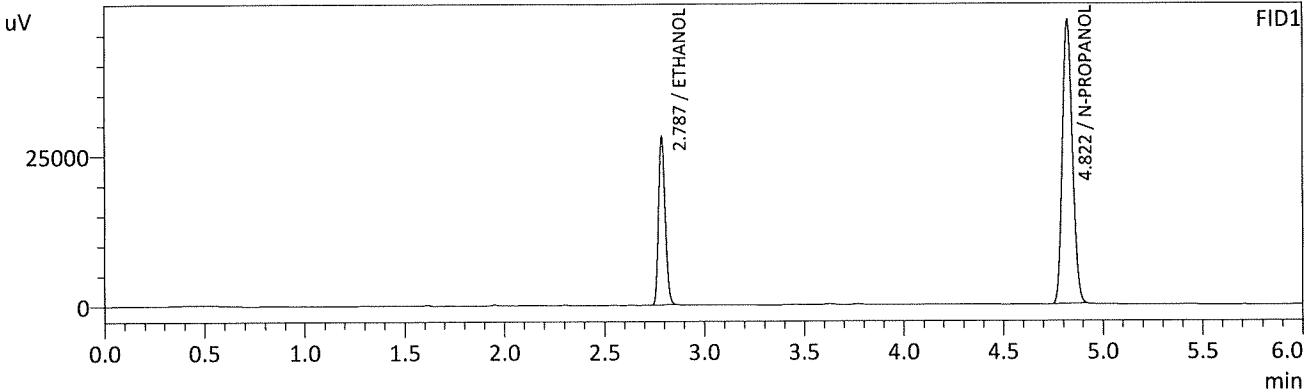


Revision: 3

Issue Date: 12/28/2020

Issuing Authority: Quality Manager

Sample Name : QC-2-1-A
 Vial # : 10
 Data Filename : QC-2-1-A_1052021_010.gcd
 Method Filename : ALCOHOL.gcm
 Batch Filename : 10-5-21 BATCH.gcb
 Date Acquired : 10/5/2021 12:26:44 PM
 Date Processed : 10/5/2021 1:13:17 PM
 C:\LabSolutions\Data\2021\10-01-21 RC\ALCOHOL.gcm



FID1

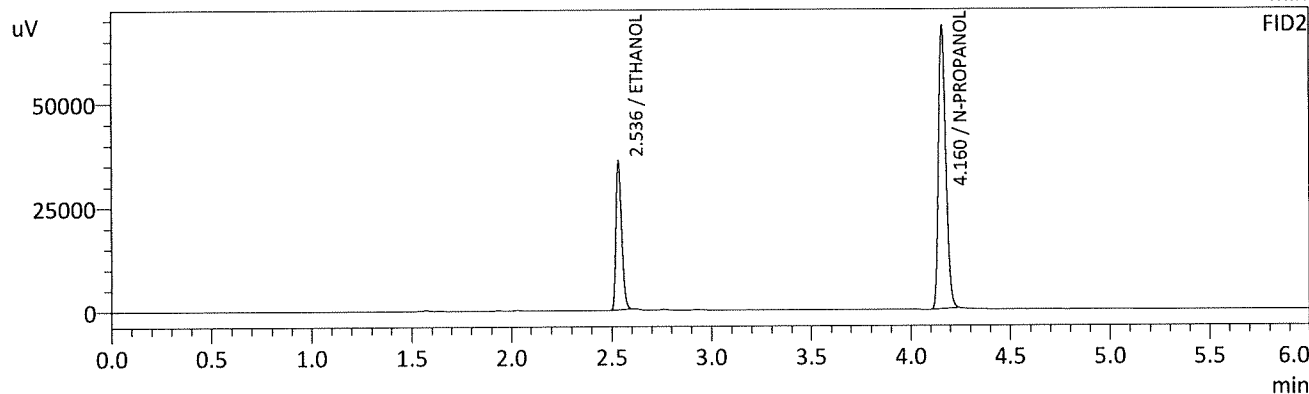
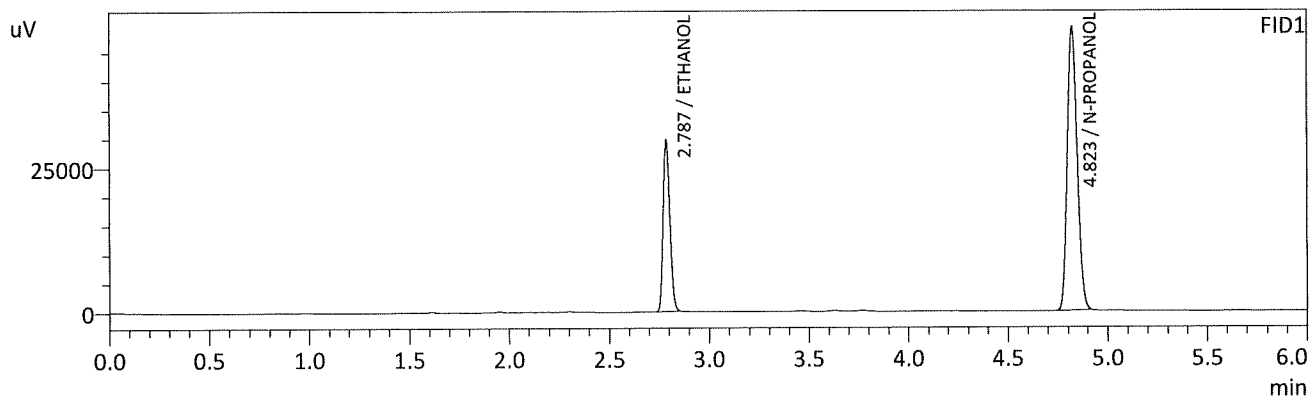
Name	Conc.	Unit	Area	Height
METHANOL	--	g/100cc	--	--
ACETALDEHYDE	--	g/100cc	--	--
ETHANOL	0.2013	g/100cc	65551	27791
ISOPROPYL ALCOHOL	--	g/100cc	--	--
ACETONE	--	g/100cc	--	--
N-PROPANOL	0.0000	g/100cc	166473	47148
DFE	--	g/100cc	--	--
TFE	--	g/100cc	--	--

FID2

Name	Conc.	Unit	Area	Height
ACETALDEHYDE	--	g/100cc	--	--
METHANOL	--	g/100cc	--	--
ETHANOL	0.2000	g/100cc	66930	33421
ACETONE	--	g/100cc	--	--
ISOPROPYL ALCOHOL	--	g/100cc	--	--
N-PROPANOL	0.0000	g/100cc	173150	65005
DFE	--	g/100cc	--	--
TFE	--	g/100cc	--	--

RC

Sample Name : QC-2-1-B
 Vial # : 11
 Data Filename : QC-2-1-B_1052021_011.gcd
 Method Filename : ALCOHOL.gcm
 Batch Filename : 10-5-21 BATCH.gcb
 Date Acquired : 10/5/2021 12:35:51 PM
 Date Processed : 10/5/2021 1:13:18 PM
 C:\LabSolutions\Data\2021\10-01-21 RC\ALCOHOL.gcm



FID1

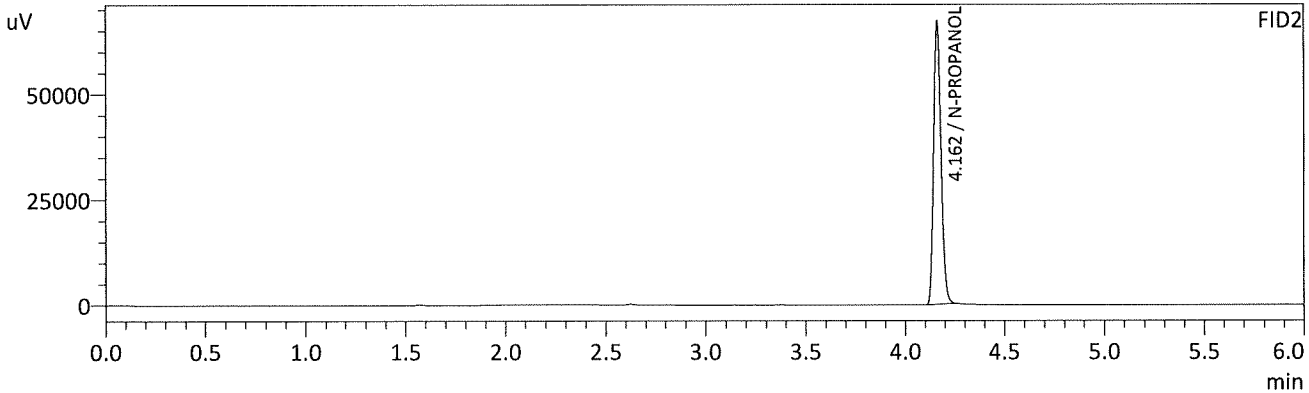
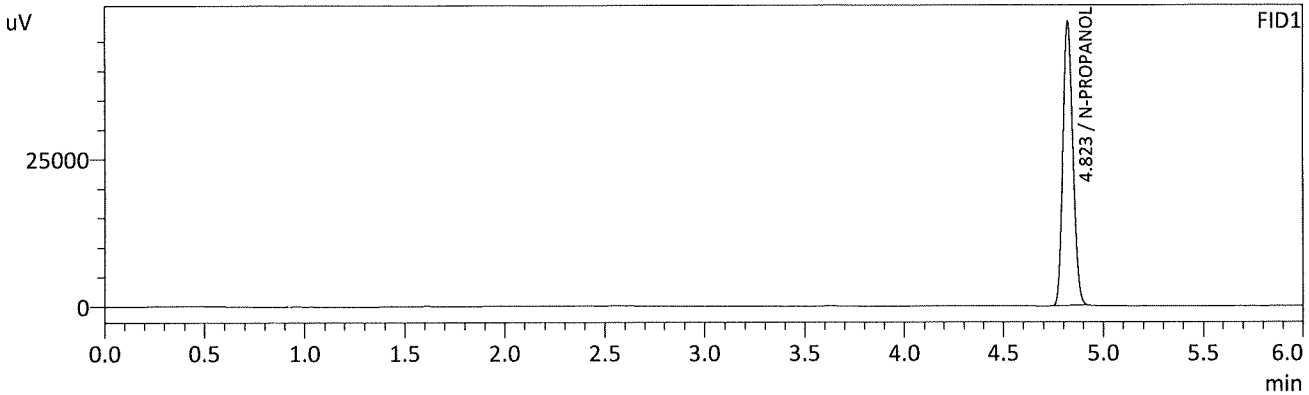
Name	Conc.	Unit	Area	Height
METHANOL	--	g/100cc	--	--
ACETALDEHYDE	--	g/100cc	--	--
ETHANOL	0.2057	g/100cc	69620	29607
ISOPROPYL ALCOHOL	--	g/100cc	--	--
ACETONE	--	g/100cc	--	--
N-PROPANOL	0.0000	g/100cc	173011	49232
DFE	--	g/100cc	--	--
TFE	--	g/100cc	--	--

FID2

Name	Conc.	Unit	Area	Height
ACETALDEHYDE	--	g/100cc	--	--
METHANOL	--	g/100cc	--	--
ETHANOL	0.2041	g/100cc	70898	35594
ACETONE	--	g/100cc	--	--
ISOPROPYL ALCOHOL	--	g/100cc	--	--
N-PROPANOL	0.0000	g/100cc	179606	68153
DFE	--	g/100cc	--	--
TFE	--	g/100cc	--	--

Handwritten signature/initials

Sample Name : INT STD BLK 3
 Vial # : 12
 Data Filename : INT STD BLK 3_1052021_012.gcd
 Method Filename : ALCOHOL.gcm
 Batch Filename : 10-5-21 BATCH.gcb
 Date Acquired : 10/5/2021 12:44:15 PM
 Date Processed : 10/5/2021 1:13:19 PM
 C:\LabSolutions\Data\2021\10-01-21 RC\ALCOHOL.gcm



FID1

Name	Conc.	Unit	Area	Height
METHANOL	--	g/100cc	--	--
ACETALDEHYDE	--	g/100cc	--	--
ETHANOL	--	g/100cc	--	--
ISOPROPYL ALCOHOL	--	g/100cc	--	--
ACETONE	--	g/100cc	--	--
N-PROPANOL	0.0000	g/100cc	168319	48208
DFE	--	g/100cc	--	--
TFE	--	g/100cc	--	--

FID2

Name	Conc.	Unit	Area	Height
ACETALDEHYDE	--	g/100cc	--	--
METHANOL	--	g/100cc	--	--
ETHANOL	--	g/100cc	--	--
ACETONE	--	g/100cc	--	--
ISOPROPYL ALCOHOL	--	g/100cc	--	--
N-PROPANOL	0.0000	g/100cc	175739	66966
DFE	--	g/100cc	--	--
TFE	--	g/100cc	--	--

Handwritten signature/initials

Region 5 Pocatello Blood Alcohol Analysis Batch Table

Shimadzu Nexis GC-2030 Serial Number: C12255850662
 Shimadzu HS-20 Serial Number: C12595700014
 LabSolutions Version 5.98
 Copyright (C) 2008-2019 Shimadzu Corporation. All rights reserved.

Vial#	Sample Name	Sample Type	Method File	Data File	Level#
1	INT STD BLK 1	0:Unknown	ALCOHOL.gcm	INT STD BLK 1_1052021_001.gcd	0
2	MULTI-COMP MIX	0:Unknown	ALCOHOL.gcm	MULTI-COMP MIX_1052021_002.gcd	1
3	INT STD BLK 2	0:Unknown	ALCOHOL.gcm	INT STD BLK 2_1052021_003.gcd	0
4	QC-1-1-A	0:Unknown	ALCOHOL.gcm	QC-1-1-A_1052021_004.gcd	0
5	QC-1-1-B	0:Unknown	ALCOHOL.gcm	QC-1-1-B_1052021_005.gcd	0
6	0.08 QA - A	0:Unknown	ALCOHOL.gcm	0.08 QA - A_1052021_006.gcd	0
7	0.08 QA - B	0:Unknown	ALCOHOL.gcm	0.08 QA - B_1052021_007.gcd	0
8	P2021-3240-1-A	0:Unknown	ALCOHOL.gcm	P2021-3240-1-A_1052021_008.gcd	0
9	P2021-3240-1-B	0:Unknown	ALCOHOL.gcm	P2021-3240-1-B_1052021_009.gcd	0
10	QC-2-1-A	0:Unknown	ALCOHOL.gcm	QC-2-1-A_1052021_010.gcd	0
11	QC-2-1-B	0:Unknown	ALCOHOL.gcm	QC-2-1-B_1052021_011.gcd	0
12	INT STD BLK 3	0:Unknown	ALCOHOL.gcm	INT STD BLK 3_1052021_012.gcd	0